



## Welcome to Southwestern College

Ph. 877-471-5756 or 505-471-5756

The mission of Southwestern College is Transforming Consciousness through Education. This schedule lists classes for degree-seeking students in Counseling, Art Therapy/Counseling, Consciousness in Action, and Art Therapy for Clinical Professionals. Degree-seeking students choose their electives from the New Earth Institute (NEI) classes.

## SUMMER 2024 QUARTER REGISTRATION INFORMATION

**SCHEDULE FORMAT:** If you would like to view an alternate version of the schedule that shows potential scheduling conflicts click [here](#). Please note that the alternate schedule only includes the basic information you need to determine which sections would work best for you. If you are still having trouble figuring out a class schedule that works for you, submit a request to [studentsupport@swc.edu](mailto:studentsupport@swc.edu) and Kelleen or Anné will set up a 15-minute meeting with you. Please come prepared to the meeting with specific questions and/or ideas/strategies in mind.

**EARLY REGISTRATION INFORMATION:** If you have a schedule conflict between certain courses that are offered on the same day and time, or your employment, childcare, travel, health, or something else, please check for an alternate day/time for one of those courses. If you determine that you must get into a specific section of 1 or more courses, please fill out the [Early Registration Request](#). Do not assume there will be room in the section you need. Requests for Early Registration are due by 5pm, Friday 5/17/24 (no exceptions). Please have your supporting documentation ready to upload to the form. NOTE: Do not submit this form if you are designated as "on ground" and want to take an online section as these requests will not be granted. See designation policy in the College Catalog or the Registration folder in the Student & Career Services group.

**REGISTRATION DATES:** You will receive an email prior to registration with your individual registration time slot. **Tuesday, 6/4: Distance Students. Thursday, 6/6: On-Ground Students. Friday, 6/7: Interns.**

**PROGRAM PLANNERS:** If you are not able to take a course at **any time** that is offered due to any of the above reasons, please submit a [Program Planner Change Request](#) which will go directly to Michelle Lynn.

**COSTS:** Tuition per quarter unit is \$626. There is an educational resource fee of \$300 per quarter of attendance.

**NOTES:** ZOOM SYNCHRONOUS courses meet at a scheduled time via Zoom. Most of the interaction occurs through Zoom during scheduled class meetings and assignments are submitted through Populi. ASYNCHRONOUS courses do not meet at a scheduled time. All coursework is completed in Populi, and interactions occur through the discussion board and other interactive learning activities. Assignments and learning activities are due per the course schedule and deadlines in Populi. ZOOM SYNCHRONOUS PLUS ASYNCHRONOUS courses meet at a scheduled time via Zoom and have additional asynchronous learning activities. These courses are intentionally scheduled to meet for less than the required hours to reduce time on Zoom (e.g., reducing meeting time from 4 hours to 3 hours and replacing 1 hour with asynchronous learning activities).

**LAST DAY TO DROP FOR MA DEGREE COURSES:** The deadline to drop a class without receiving a "W" on transcript is 5pm on Monday\* of the second week of the quarter (July 1st), with the exception of classes that start in the second week of the quarter. The drop deadline for classes starting in the second week of the quarter is by 5pm on the Monday\* of the third week of the quarter. Drops are effective on the date the Course Add/Drop form is initiated. Courses are considered "Dropped" and removed from student's transcript if the drop occurs by the deadline (For tuition refund information, see Refund Policy)

\*If Monday is a holiday, the deadline is Tuesday.

## SUMMER 2024 QUARTER SCHEDULE

**NOTE: All class times are in Mountain Standard Time (MST).**

### ART THERAPY TECHNIQUES AND MATERIALS (AT/CN 593)

\$1878/ 3 quarter units

**Section 1:** Alyssa Butler, MA, ATR-BC, LPCC

Mondays, 6/24-8/26, 2-5pm; *SWC Campus*

**Section 2:** Joanne Ramseyer, MA, ATR-BC, LCPC

Tuesdays, 6/25-8/27, 2-5pm; Zoom Synchronous

**Section 3:** Micaela Wood, MA, ATR-BC, LPCC

Thursdays, 6/27-8/29, 1-4 pm; Zoom Synchronous

### ART THERAPY/COUNSELING CAPSTONE PRESENTATIONS: PART II (AT/CN 637-B)

\$313/.5 quarter units

**Must be taken with AT/CN Internship**

Jennifer Albright Knash, DAT, ATRL-BC, LPAT, LPC/AODA, LPCC, CCTP

Wednesdays, 7/3, 8/28, 4-6pm; Zoom Synchronous plus Asynchronous

<b>ART THERAPY/COUNSELING CAPSTONE PROCESS: PART I (AT/CN 637-A)</b> <i>Must be taken with AT/CN Practicum II</i> Jennifer Albright Knash, DAT, ATRL-BC, LPAT, LPC/AODA, LPCC, CCTP Mondays, 7/1, 7/15, 8/26, 4-6pm, Sunday, 8/4, 10am-4pm; Zoom Synchronous plus Asynchronous	\$313/.5 quarter units
<b>ART THERAPY/COUNSELING INTERNSHIP II (AT/CN 698-7L.2)</b> <i>Prerequisite: Completion of all coursework and Internship I.</i> Seren Morris, MDiv, MA, ATR-BC, LPCC 6/24-9/1; Asynchronous	\$2817/4.5 quarter units
<b>COUNSELING INTERNSHIP II (CN 698-9L.2)</b> <i>Prerequisite: Completion of all coursework and Internship II.</i> Allison Davis, MS, LPCC, PhD 6/24-9/1; Asynchronous	\$2817/4.5 quarter units
<b>GROUP DYNAMICS (CN AT 543-2)</b> <b>Section 1:</b> Carlos Gonzalez, PhD, Licensed Psychologist Tuesdays, 6/25-8/27, 2-5pm; Zoom Synchronous plus Asynchronous <b>Section 2:</b> Randal Lea, MA, LADAC Tuesdays, 6/25-8/27, 4-7pm; Zoom Synchronous plus Asynchronous <b>Section 3:</b> Diana Zumas, MA, LPC, LPCC Wednesdays, 6/26-8/28, 9am-12pm; <i>SWC Campus</i> plus Asynchronous <b>Section 4:</b> Micaela Wood, MA, ATR-BC, LPCC Wednesdays, 6/26-8/28, 1-4pm; Zoom Synchronous plus Asynchronous <b>Section 5:</b> Angela Kehm, MA, LPC Thursdays, 6/27-8/29, 2-5pm; Zoom Synchronous plus Asynchronous	\$2817/4.5 quarter units
<b>HERMENEUTICS OF SELF: TRANSFORMATION AND HEALING THROUGH IMAGINAL WAYS OF KNOWING (CN AT 523-4)</b> <i>Prerequisites: CN AT 574 Psychology of Altruism: Fundamentals of Helping Relationships, CN AT 522-2 Applied Theories of Human Development, and CN AT 530-3 Consciousness I: Cultivating the Healing Power of Presence</i> <b>Section 1:</b> April Vogel, PhD, Licensed Psychologist Tuesdays, 6/25-8/27, 9am-1pm; Zoom Synchronous <b>Section 2:</b> Marialuisa Diaz de Leon Z., MA, REAT, MSMT, MSME Tuesdays, 6/25-8/27, 9am-1pm; Zoom Synchronous <b>Section 3:</b> Roxie Ehlert, MA, ATR-BC, LCPC Tuesdays, 6/25-8/27, 2-6pm; <i>SWC Campus</i> <b>Section 4:</b> Kate Latimer, MA, LPCC Tuesdays, 6/25-8/27, 2-6pm; <i>SWC Campus</i> <b>Section 5:</b> Kate Latimer, MA, LPCC Thursdays, 6/27-8/29, 9am-1pm; Zoom Synchronous	\$2504/4 quarter units
<b>MASTER'S THESIS AND PRESENTATION (CINA 600)</b> Rahima Schmall, PhD, RN Thursdays, 6/27, 7/04, 8/01, 8/22, 8/29, 9am-12pm; Zoom Synchronous plus Asynchronous	\$3130/5 quarter units
<b>(Art Therapy) PRACTICUM II &amp; Lab: HELPING RELATIONSHIPS W/ GROUPS, COUPLES &amp; FAMILIES IN AT/CN (AT/CN 657-2)</b> Seren Morris, MDiv, MA, ATR-BC, LPCC Class: Tuesdays, 6/25-8/27, 12-3pm; Zoom Synchronous Lab 1: Wednesdays, 6/26-8/28, 12-1:30pm; Zoom Synchronous Lab 2: Thursdays, 6/27-8/29, 12-1:30pm; Zoom Synchronous	\$2504/4 quarter units
<b>(Counseling) PRACTICUM II: Helping Relationships w/Groups, Couples &amp; Families in CN (CN 657-4)</b> <b>Section 1:</b> Vanessa Torres McGovern, MA, LPCC Thursdays, 6/27-8/29, 9:30am-12:30pm; <i>SWC Campus</i> <b>Section 2:</b> Naja Druva, MS, LPCC Thursdays, 6/27-8/29, 9:30am-12:30pm; Zoom Synchronous	\$2504/4 quarter units

**(Art Therapy) PROFESSIONAL SEMINAR IN Art Therapy/Counseling: Professional Orientation (AT/CN 698-7)**

\$1252/2 quarter units

**Section 1:** Jennifer Albright Knash, DAT, ATRL-BC, LPAT, LPC/AODA, LPCC, CCTP  
Tuesdays, 6/25-8/27, 9-11am; Zoom Synchronous plus Asynchronous  
**Section 2:** Jennifer Albright Knash, DAT, ATRL-BC, LPAT, LPC/AODA, LPCC, CCTP  
Tuesdays, 6/25-8/27, 4-6pm; Zoom Synchronous plus Asynchronous  
**Section 3:** Seren Morris, MDiv, MA, ATR-BC, LPCC  
Fridays, 6/28-8/30, 9-11am; *SWC Campus* plus Asynchronous

**(Counseling) PROFESSIONAL SEMINAR IN COUNSELING II: ORIENTATION TO THE COUNSELING PROFESSION (CN 698-9)**

\$1252/2 quarter units

**Section 1:** Vanessa Torres McGovern, MA, LPCC  
Wednesdays, 6/26-8/28, 9-11am; *SWC Campus*  
**Section 2:** Vanessa Torres McGovern, MA, LPCC  
Wednesdays, 6/26-8/28, 12-2pm; Zoom Synchronous

**RESEARCH METHODS AND PROGRAM EVALUATION (CN AT 598-6)**

\$2817/4.5 quarter units

**Section 1:** Allison Davis, MS, LPCC, PhD  
Tuesdays, 6/25-8/27, 9:30am-12:30pm; *SWC Campus* plus Asynchronous  
**Section 2:** Micaela Wood, MA, ATR-BC, LPCC  
Tuesdays, 6/25-8/27, 1:30-4:30pm; Zoom Synchronous plus Asynchronous  
**Section 3:** Naja Druva, MS, LPCC  
Wednesdays, 6/26-8/28, 9:30am-12:30pm; Zoom Synchronous plus Asynchronous  
**Section 4:** Amy Lueck, MA, LMHC  
Fridays, 6/28-8/30, 1-4pm; Zoom Synchronous plus Asynchronous

**NEI CERTIFICATE PROGRAMS & CONTINUING EDUCATION**

**NEI CERTIFICATE COURSES CAN BE TAKEN FOR:**

- Degree credit as an elective in your degree program. Please use the registration process via Populi to register for credit. (See "NEI Course Registration Info" in the Student and Career Services Group in the File called "Electives/NEI Courses—info on how to register for them.")
- Non-credit (NC) by SWC students for the NC price and still count toward certificate completion. (Use this link <https://newearth.regfox.com/nei-registration-form> to register for non-credit NEI classes any time.)
- 16 New Mexico Counseling and Therapy Practice Board Approved CEUs available for mental health professionals.

**REFUNDS:** 100% refund available for students who withdraw up to 72 hours before start of class minus a \$50 administrative fee. No refunds less than 72 hours before class. Please contact the Registrar's Office [collegeregistrar@swc.edu](mailto:collegeregistrar@swc.edu) to process your cancellation.

**APPLIED INTERPERSONAL NEUROBIOLOGY (AIN) CERTIFICATE**

**CULTIVATING NEW NEURAL PATHWAYS FOR PERSONAL AND SOCIAL CHANGE THROUGH PSYCHODRAMA (AIN 5150)**

\$375/16 CEUs/non-credit or \$1252/2 quarter units/credit

Saturday & Sunday, 6/29 & 6/30, 9am–6:30pm; **SWC Campus**

We are living in a time when the personal and collective reimagining of our world is crucial. Research in neuroscience concludes that embodied, relational techniques most effectively alter and retrain the deep neurological pathways that govern perception, experience, and our capacity for creative expression and relationship. Psychodrama offers an embodied method for co-creating a sanctuary space where personal and collective storylines can be mindfully explored. Moreover, in psychodrama, differences and borders can be safely and openly examined. The group as a whole becomes the vehicle to expand creativity and to foster relational repair of personal and collective trauma and attachment. Participants will learn and practice action techniques that can be used either on their own or in conjunction with a fully developed drama. Supportive theory from relational neuroscience will highlight: the role of mindful play in cultivating safety and revealing underlying/implicit storylines, awareness of the trauma vortex, ways to maximize co-regulation, the transpersonal aspects of process, and a re-imagining of the role of leader.



**Diana Zumas, MA, LPC, LPCC**, has 17 years of psychodrama, sociometry, and group psychotherapy training. She has a psychotherapy private practice in Santa Fe, NM. She has been a psychotherapist since 2008 with a trauma informed, relational and experiential focus. Diana is trained in EMDR I and II, has over 650 hours of psychodrama training, and is Internal Family Systems informed. She has a passion for group process and believes what Thich Nhat Hanh proposed that "the next Buddha may be a Sangha (group)."

## CHILDREN'S MENTAL HEALTH (CMH) CERTIFICATE

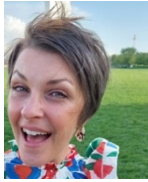
### ATTACHMENT: THE HEART OF WELL-BEING (CMH 5250)

Saturday & Sunday, 7/6 & 7/7, 9am–6:30pm; Zoom Synchronous

**CMH 5250 required for the Children's Mental Health Certificate**

\$375/16 CEUs/non-credit or  
\$1252/2 quarter units/credit

Students will explore the foundations of early parent-child relations to recognize how child development and primary attachment imprints affect future well-being and interpersonal relational patterns. Considering heart-opening, ethical, and cross-cultural practices, students will differentiate between early disruptions that can be repaired and strengthened through attuned counseling promoting healing and secure attachments between children and parental figures. Lastly, experiential processes designed to strengthen healthy attachment will combine students' personal and professional development.



**Katie Brammer PhD, LPC**, (She, Her, Hers) is a Counselor Educator with a background as both a Mental Health Clinician and School Counselor and is the NEI Children's Mental Health Certificate Director. She views her teaching, scholarship, counseling, and supervisory practices as holistic and collaborative, and tailors transformational approaches into her work with the anticipation that needs of each individual are met.

## TRAUMA, GRIEF, AND RENEWAL (TGR) CERTIFICATE

### ETHICS, SELF-COMPASSION AND PROFESSIONAL ISSUES (TGR 5600)

Saturday & Sunday, 7/13 & 7/14, 9am–6pm; Zoom Synchronous

\$375/16 CEUs/non-credit or  
\$1252/2 quarter units/credit

The weekend will include an in-depth exploration of Ethics, not only those required by various counseling organizations, but also the inner ethics of each of us, ethics in our Times and the ethics of various cultures, plus legal tools for planning for both pre-death and post-death issues, and family involvement in this process. Compassion fatigue, therapist renewal, self-care, and prevention of burn-out, at mental, emotional, and spiritual levels, will also be addressed. The class will include experiential work as well as informational presentations.



**Rev. Ted Wiard, EdD, LPCC**, is the Director of the Trauma, Grief, and Renewal Certificate. Dr. Wiard is the founder and Director of Golden Willow Counseling and Golden Willow Retreat Center. He is also the co-author of *Witnessing Ted: The Journey to Potential through Grief and Loss* as well and continues to write professional articles pertaining to emotional healing. Dr. Wiard also maintains a private practice.

## ADDICTIONS, ABUSE, AND RECOVERY (AAR) CERTIFICATE

### A CULTURE OF ADDICTION: SYSTEMIC AND ECOLOGICAL PERSPECTIVES ON ADDICTION AND RECOVERY (AAR 5050)

Saturday & Sunday, 7/20 & 7/21, 9am–6:30pm; Zoom Synchronous

\$375/16 CEUs/non-credit or  
\$1252/2 quarter units/credit

How has the dominant cultural paradigm promoted and perpetuated a culture of addiction across the socio-economic spectrum? How do we break out of the dominant cultural paradigm in order to decentralize our theoretical understanding of addiction and recovery? How do we support healing and recovery while living in a toxic and traumatizing industrial cultural complex? In this course, students will analyze the etiology of addiction through the lens of modern culture, using relevant contemporary professional literature, and systemic ecological theoretical models. Mainstream approaches to addictions treatment and its historical roots will be examined and strategies for detoxifying from dominant cultural programming will be explored. Cultural considerations and comparisons regarding treatment access and approaches for both privileged and marginalized populations will be discussed. Students will also gain pragmatic clinical skills for decentralizing treatment, in order to apply innovative and holistic trauma informed interventions that can help guide clients back to lasting sustainable healing and recovery.



**Richard Pelfrey, BA, LADAC, NCAC**, has been holding space for the resolution and reintegration of trauma and addictions of all forms for the past 12 years. While becoming licensed as an addictions counselor, Richard heard the call to expand his work with people beyond traditional models and began exploring alternative methods for the resolution of trauma. Richard is trained and certified in Trauma Sensitive Yoga, Wim Hoff method, and Brainspotting, meditation leadership and grief counseling, and incorporates all of these modalities as well as a decade of apprenticeship in the Toltec wisdom path and traditional earth-based ceremony in his focused work with individuals and groups for the purpose of healing and finding our highest joy and artistry in life.

## PSYCHEDELIC STUDIES (PS) CERTIFICATE

### NAVIGATING ETHICAL PRACTICE IN THE WILD WEST OF PSYCHEDELICS: SAFETY AND RISK REDUCTION IN AN EMERGING LANDSCAPE (PS 5300)

\$375/16 CEUs/non-credit or  
\$1252/2 quarter units/credit

Saturday & Sunday, 7/27 & 7/28, 9am–6pm; Zoom Synchronous

**PS 5300 required for the Psychedelic Studies Certificate**

This course will challenge students to apply ethical considerations in psychedelic-assisted therapy to enhance safety and reduce risk. Through reflective practice, this course will help students identify and deconstruct myths and biases that they may hold from historical and cultural influences. The extent and limitations of professional roles and scope of practice will be examined, while considering the scientific and cultural resources used to inform ethical decision-making. Students will explore topics of sustainability, appropriation, and other social justice issues and identify best practices for determining readiness, appropriateness of fit, and informed consent.



**Amy Wong Hope, MSW, LCSW**, is the Certificate Program Director of the Psychedelic Studies Certificate. Amy is trained as an MDMA-assisted therapist through the (MAPS) Multidisciplinary Association for Psychedelic Studies and co-author of *Small Doses of Awareness: A Microdosing Companion* (due to be published spring 2024). Amy maintains a private practice with a focus on trauma-informed modalities and shame-resilience approaches that support clients in restoring emotional, somatic, and relational resiliency.

## ECOTHERAPY (TE) CERTIFICATE

### ANIMATING THE SACRED: DEEPENING OUR INTERCONNECTION WITH THE EARTH (TE 5050)

\$375/16 CEUs/non-credit or  
\$1252/2 quarter units/credit

Saturday & Sunday, 8/10 & 8/11, 9am–6:30pm; Zoom Synchronous

The Earth is a sacred being. She reminds us that we are part of one ecosystem, of life sustaining life. Many of us experience the historical and cultural norms of cultures of domination that create separation and disconnection and reinforce a strong sense of individual identity. We often lose the sense of belonging to and with the Earth. Awakening to animate the sacredness of the Earth to move through us is a way to deepen our interconnectedness and knowing of this belonging. In this course, we will explore through deepening our presence in meditation practice, practices of Earth dreaming and Terrapsychology, ceremony/ritual and connection to the mystery, Earth art, and deep ecology. These Earth-honoring practices for enriching our relationship with ourselves, one another, and the Earth will remind us of our deep connectedness. We will activate the sacred animacy of the Earth to move through us, to bring this into greater consciousness. We will examine the ways that we are disconnected and blocked. We will identify and practice releasing resistance and barriers to this divine truth that we are part of all life as we open embodied pathways allowing the transformative and healing qualities of life to move through us. We will explore these mutual, life-giving practices of connectedness as acts of regenerative remembrance. During the course, you will have the opportunity to develop and deepen your personal relationship with the sacred aliveness of the Earth and learn to bring this alive into the ecotherapy work you plan to share with your clients.



**Rochelle Calvert, PhD, CMT, SEP**, is the author of *Healing with Nature: Mindfulness and Somatic Practices to Heal from Trauma*. She has studied and taught mindfulness for the past 19 years and personally knows the transformational potential. Dr. Calvert currently leads courses, workshops, and treats in mindfulness and somatic experiencing in nature. As a licensed clinical psychologist and founder of New Mindful Life, she supports her clients, taking them into nature with the aid of Bertha Grace, a Sprinter van that serves as a mobile therapy office.

[www.newmindfullife.com](http://www.newmindfullife.com)



## ECOTHERAPY (TE) CERTIFICATE

### WILDERNESS FAST (TE 5700)

September 7 – 15, 2024; In person, Canon de Chelly

Orientation Sunday August 4, 2-4pm; SWC campus

\*Additional fee of approximately \$450 cash to be paid directly to our Navajo Guide before entering the canyon.

Tuition for the Wilderness Fast is non-refundable after 8/2/24

\$1252/2 quarter units or 16 CEUs/non-credit + additional fee\*

The Wilderness Fast ceremony has long been practiced to assist with major life transitions. It is a deeply transformative experience in which participants spend four days alone with no food and a minimum of material comforts. The three stages of rite of passage (severance, threshold, and incorporation) are guided by experienced facilitators who also provide instruction in basic wilderness safety and support for this unique opportunity for personal transformation and contact with nature in a wilderness environment. The structure for the wilderness fast, taught by The School of Lost Borders and drawn from Native American cultural practices, is not identical to the specific vision quest ceremonies of any cultural group.



**Katherine Ninos, MA, LPCC**, is Executive Vice President of SWC and Director of the New Earth Institute Programs. She is an experienced clinician, ceremonialist, and consciousness teacher.

**Carol Parker, PhD, LPCC**, training as a wilderness fast guide with the School of Lost Borders and has studied with indigenous healers from the Amazon and the Andes. Since 1997, she has led groups to sacred sites in the southwestern US, Peru, and Hawaii.

