

Quimby Memorial Library's Special Exhibit

DIE WANDLUNG

“The Transformation”



A collection of extraordinary artwork
created by a young woman with schizophrenia
between 1968—1971

On display from
Jan 9th—April 7th, 2023

On the campus of
Southwestern College at
3960 San Felipe Rd.

We are open
weekdays from
9AM to 5PM
(closed 1:30-2:30
for lunch)

For directions or
additional information,
email us at
askthelibrary@swc.edu
or call **505-467-6825**

In 2012 a large collection of texts was
donated to Quimby Memorial Library by the
C.G. Jung Institute of Santa Fe.

As Quimby's librarians unboxed, explored,
and organized this donation, they found
something mysterious, among the books,
manuscripts, and ephemera.

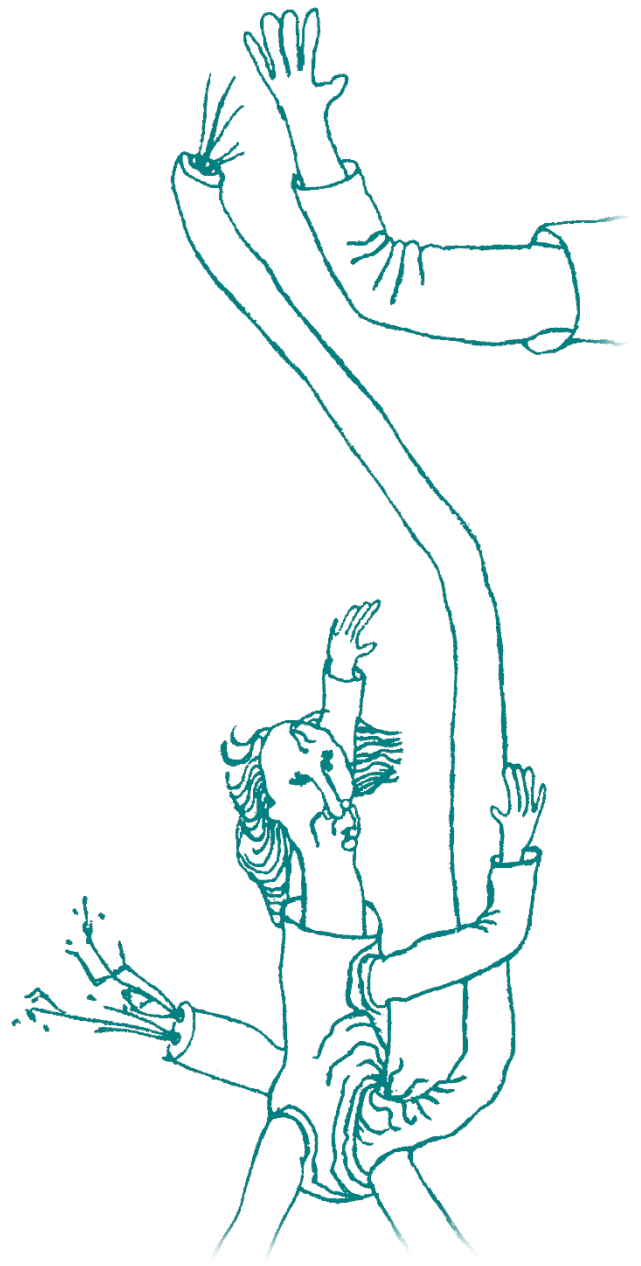
It was a manila envelope, bearing an
inscription which read:

***“Xerox copies of fascinating
drawings done by a schizophrenic
young woman who threw herself
under a train”***

Inside the envelope were faded copies of
over 60 drawings, created by this unknown
artist.

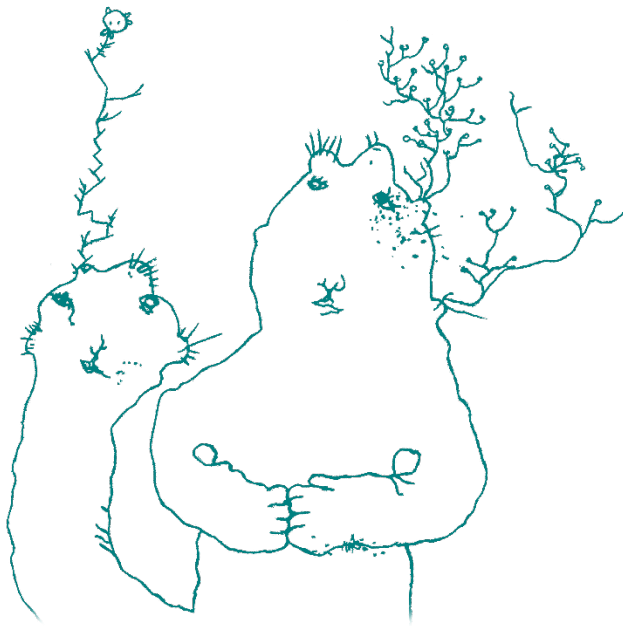
**The artwork, richly imaginative, troublingly
evocative, and representing a wholly unique
vision, inspired the librarians at Quimby
Memorial, who set to work on restoring the
drawings from their aged, photocopied state.**

Following months of these efforts, Quimby
Memorial Library has prepared an exhibition
of drawings from this collection.



You are invited to experience the vision and perspective of this artist, at what is likely the first ever exhibition of her work, hosted at Quimby Memorial Library and offered with intent to inspire education, discussion, and discovery at the intersection of art and mental illness.

Note on Ethical Considerations



Given the sensitive nature of this artwork and of our limited knowledge on its creator, librarians at Quimby took various measures to ensure that the drawings are exhibited ethically.

Following extensive research and consultations with a licensed art therapist and art therapy educator, librarians could not conclude that the drawings were done in a clinical setting.

Furthermore, no records of the artist nor any surviving family was uncovered.

Librarians at Quimby make the artwork freely and publicly accessible, simply with the intent to finally honor the artist's unique vision and to promote education and discourse.

Quimby Memorial Library is an academic library, serving the students and faculty at Southwestern College. Along with its print and digital collections of contemporary literature on art therapy, counseling, psychology, and human behavior, the library houses collections of rare and unusual texts, from the canons of metaphysics, comparative religion, and Jungian theory.

